



*WFP celebrates and embraces diversity. It is committed to the principle of equal employment opportunity for all its employees and encourages qualified candidates to apply irrespective of race, colour, national origin, ethnic or social background, genetic information, gender, gender identity and/or expression, sexual orientation, religion or belief, HIV status, physical or mental disability.*

**Livelihoods Fellow  
Food Systems Unit  
WFP Namibia Country Office, Windhoek**

**BRIEF DESCRIPTION OF THE DIVISION**

World Food Programme in Namibia works with the Government to change and save lives of the Namibian population.

Through Namibia's Country Strategic Plan 2025 – 2029, WFP aims to strengthen resilience by supporting Government and stakeholders to strengthen national efforts to achieve food security and improved nutrition by 2030, in line with the Sustainable Development Goal (SDG) 2. It also seeks to contribute to progress in SDG 1, SDG 4, SDG 5, SDG 10, SDG 13 and foster a reinforced partnership in strengthening the national humanitarian and development response, in accordance with SDG 17. Through this Country Strategic Plan, WFP will reinforce national efforts through supporting crises affected populations to meet their food needs, strengthening social protection systems including human capital development and nutrition, food systems transformation, supply chain and provide technical assistance and policy advice to help maximize the return on your government's investment in food security and nutrition.

As part of the Country Office work on food systems, WFP continues to implement Resilience programmes aimed at improving food and nutrition security, income generation, create employment opportunities and reduce poverty and inequality. The Resilience programmes are implemented across the various regions, and they are based at schools, health centres and resettlement farms. The size of these projects ranges from 2 hectares to 60 hectares.

**GENERAL INFORMATION**

- **Type of assignment: FELLOWSHIP**
- **Number of available positions: 1**
- **Country of assignment: Namibia**
- **City of assignment: Windhoek**
- **Hiring Unit: Food Systems Unit**
- **Supervisor: Programme Policy Officer: Food Systems**
- **Working arrangement: In-person fellowship**

- **Duration of assignment: 12 months**
- **Expected Starting Date: July 2025**

### **DUTIES AND RESPONSIBILITIES**

- Support the design and execution of livelihood programmes focusing on economic generation, youth and women empowerment, improve food and nutrition security and reduce poverty and inequalities
- Assist with assessing and tracking the progress of ongoing WFP supported resilience initiatives
- Support the design of a graduation framework for WFP supported resilience programmes
- Assist in coordinating project activities, ensuring timelines and deliverables are met.
- Conduct research on livelihood strategies, industry sectors, and market dynamics.
- Support with proposal development
- Contribute to preparing reports on project outcomes and lessons learned.

### **STANDARD MINIMUM QUALIFICATIONS**

- Be a Master's student or graduate in Planning and Development, Agribusiness, Development Studies or other related fields
- Excellent written and spoken English is required (proficiency/level C). Working knowledge of another official UN language (French, Spanish, Arabic, Chinese, Russian plus Portuguese) is an asset.
- Previous experience in designing community development projects, preferably in countries in the Global South.
- Strong interest in economic development and understanding of key issues related to business, poverty reduction, and growth strategies.
- Good analytical skills, with the ability to collect, analyse, and interpret data.
- Fellowship experience highly desirable.

### **TRAINING COMPONENTS**

Throughout their assignment WFP Fellows have access to an industry leading learning platform, weLearn. Depending on opportunities and availability of funds, he/she may participate in WFP workshops or seminars, as appropriate.

### **LEARNING ELEMENTS**

At the end of the assignment, the Fellow should:

- Design a livelihoods programme focusing on economic generation, youth and women empowerment, improve food and nutrition security and reduce poverty and inequalities
- Design a graduation framework for WFP supported resilience programmes
- Prepare a detailed report outlining lessons learnt and recommendations

### **INFORMATION ON THE COUNTRY OF ASSIGNMENT**

Namibia, located in Southern Africa, is a country known for its stunning landscapes, including vast deserts, rocky coastlines, and wildlife-rich national parks. It borders Angola to the north, Zambia to the northeast,

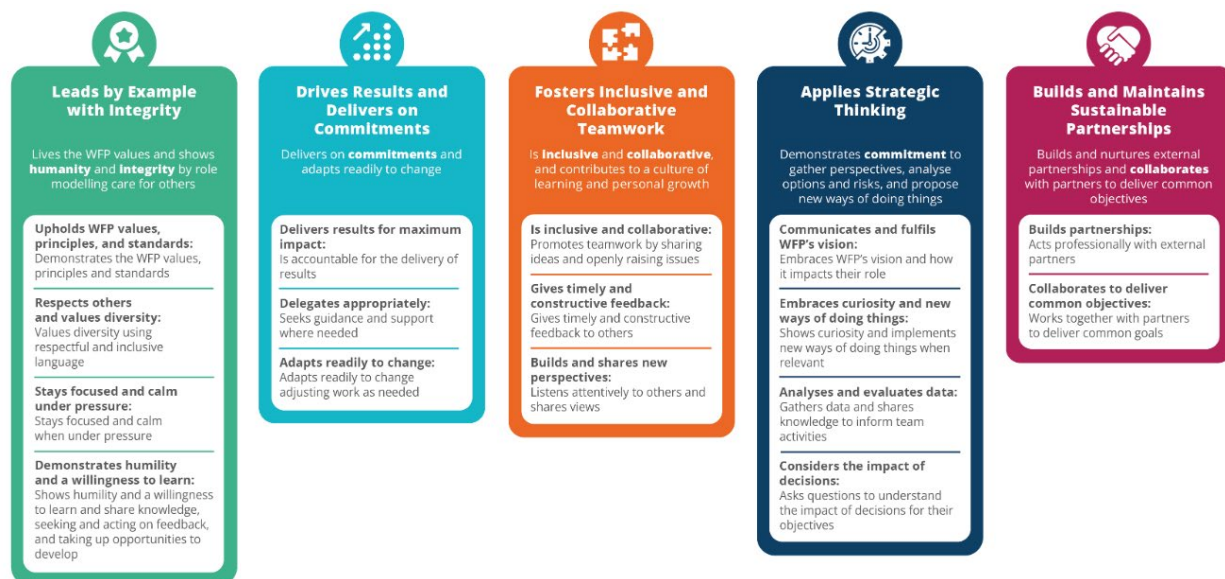
Botswana to the east, and South Africa to the south, with the Atlantic Ocean to the west. The capital, Windhoek, serves as the political and economic hub of the country. The Namibian Dollar (NAD) is the official currency of Namibia and is pegged to the South African Rand (ZAR), meaning the two currencies are interchangeable within Namibia. As of 2024, Namibia's population is about 3 million, accounting for approximately 0.04% of the global population. Despite its small population, Namibia boasts a rich linguistic landscape, with English as the official language and over 15 local languages.

Namibia gained independence from South Africa in 1990 and has since developed into a stable and growing democracy. Namibia is generally considered safe with relatively low crime compared to some other countries in the region. Namibia's road infrastructure quality remains the best in Africa, especially in major cities and popular tourist areas

Namibia is one of the driest countries in Southern Africa, in 2024 the Government declared a State-of-Emergency over the El Nino induced drought. During the summer months (October to April), temperatures can soar to 35°C (95°F) or higher, particularly in the north and south. Winter days (May to September) are generally pleasant, but nighttime temperatures can fall below freezing, with daytime averages ranging between 18-22°C (64-72°F). This period also includes the rainy season, which is divided into a short rainy season (September to November) and a main rainy season (December to April). The rains are usually brief but offer welcome relief from the heat. Namibia's clear skies, low population density, and unpolluted air make it an excellent location for stargazing.

## WFP LEADERSHIP FRAMEWORK

These are the common standards of behaviour that guide HOW we work together to accomplish our mission.



Different expectations of behaviour are defined depending on your grade and role/responsibilities within WFP.

*All employment decisions are made on the basis of organizational needs, job requirements, merit, and individual qualifications. WFP is committed to providing an inclusive work environment free of sexual exploitation and abuse, all forms of discrimination, any kind of harassment, sexual harassment, and abuse of authority. Therefore, all selected candidates will undergo rigorous reference and background checks. No appointment under any kind of contract will be offered to members of the UN Advisory Committee on Administrative and Budgetary Questions (ACABQ), Fellowational Civil Service Commission (ICSC), FAO Finance Committee, WFP External Auditor, WFP Audit Committee, Joint Inspection Unit (JIU) and other similar bodies within the United Nations system with oversight responsibilities over WFP, both during their service and within three years of ceasing that service.*

**Saving Lives  
Changing Lives**