



WFP celebrates and embraces diversity. It is committed to the principle of equal employment opportunity for all its employees and encourages qualified candidates to apply irrespective of race, colour, national origin, ethnic or social background, genetic information, gender, gender identity and/or expression, sexual orientation, religion or belief, HIV status, physical or mental disability.

**Data Engineer
Technology Division
WFP Regional Bureau for the Middle East and Northern Africa (RBC)
Cairo, Egypt**

BRIEF DESCRIPTION OF THE DIVISION

The United Nations World Food Programme is the world's largest humanitarian agency fighting hunger worldwide. The mission of WFP is to help the world achieve Zero Hunger in our lifetimes. Every day, WFP works worldwide to ensure that no child goes to bed hungry and that the poorest and most vulnerable, particularly women and children, can access the nutritious food they need.

WFP's Regional Bureau for the Middle East and Northern Africa (RBC), based in Cairo, Egypt, provides strategic guidance, policy/technical support, and direction to WFP operations and activities in 16 countries: Algeria, Armenia, Egypt, Iran, Iraq, Jordan, Lebanon, Libya, Moldova, Morocco, State of Palestine, Syria, Tunisia, Turkey, Ukraine and Yemen. These country offices aim to assist roughly one-third of all of WFP's beneficiaries (approx. 30 million) in some of the most critical humanitarian emergencies of our time. RBC is also active in the 'Changing Lives' side of WFP's mandate, helping national governments and local communities improve nutrition, livelihoods, school feeding, social protection, climate and disaster risk reduction, and other programs that build resilience and support development.

This assignment is part of WFP RBC's Google AI sandbox initiative. This initiative creates a safe environment to pilot AI use cases relevant to RBC in coordination with HQ. This assignment is to support in the data engineering of the identified regional AI use cases by researching, developing, and piloting the needed data pipelines.

GENERAL INFORMATION

- **Type of assignment: FELLOWSHIP**
- **Number of available positions: 1**
- **Country of assignment: Egypt**
- **City of assignment: Cairo**
- **Hiring Unit: Technology**
- **Supervisor: Regional Data and AI Coordinator**
- **Working arrangement: In-person**
- **Duration of assignment: 12 Months**
- **Expected Starting Date: July 2025**

DUTIES AND RESPONSIBILITIES

Reporting to the regional data coordinator in RBC's Data/AI team, the data engineer will be responsible for provision of the following services in support of the AI sandbox:

- Support the design, development, and maintenance of scalable data pipelines to support data-driven decision-making.
- Optimize and automate data ingestion, storage, and transformation processes across multiple sources.
- Ensure data quality, consistency, and integrity through validation, cleaning, and monitoring.
- Work with cloud technologies to enhance WFP's data infrastructure, leveraging services such as AWS, Google Cloud, or Azure.
- Collaborate with data scientists and analysts to enable AI and machine learning capabilities.
- Support developing APIs and data access layers to facilitate efficient data retrieval and usage.
- Document processes, pipelines, and workflows to ensure maintainability and scalability.
- Other tasks as required.

STANDARD MINIMUM QUALIFICATIONS

- Be a master's student or a graduate in Computer Science, Data Engineering, or a related technical field.
- Excellent written and spoken English is required (proficiency/level C). Working knowledge of another official UN language (French, Spanish, Arabic, Chinese, Russian plus Portuguese) is an asset.
- Proficiency in programming languages such as Python, SQL, or Scala.
- Experience working with big data frameworks such as Apache Spark, Hadoop, or Kafka.
- Strong understanding of data modeling, ETL processes, and relational as well as NoSQL databases.
- Experience in cloud computing and managing data infrastructure on platforms such as AWS, Google Cloud, or Azure.
- Excellent interpersonal skills; culturally and socially sensitive; ability to work inclusively and collaboratively with a range of partners.
- Ability to work effectively in a multicultural team of international and national personnel.
- Self-motivated, ability to work on MVPs in an agile environment; ability to work with tight deadlines.
- Sound security awareness.
- Have affinity with or interest in leveraging data engineering in the humanitarian domain.
- International experience highly desirable.

TRAINING COMPONENTS

Throughout their assignment WFP fellows have access to an industry leading learning platform, WeLearn. Depending on opportunities and availability of funds, he/she may participate in WFP workshops or seminars, as appropriate.

LEARNING ELEMENTS

At the end of the assignment, the Fellow should be able to:

- Design and build scalable data pipelines for processing large datasets.
- Optimize and maintain data infrastructure using cloud-based solutions.
- Develop automated data ingestion and transformation workflows.
- Apply data governance and security best practices to WFP data systems.
- Implement real-time and batch data processing architectures.
- Collaborate with cross-functional teams to integrate data solutions into operational processes.

- Document data engineering processes and methodologies effectively.
- Understand the role of data engineering in humanitarian operations and apply it to real-world challenges.

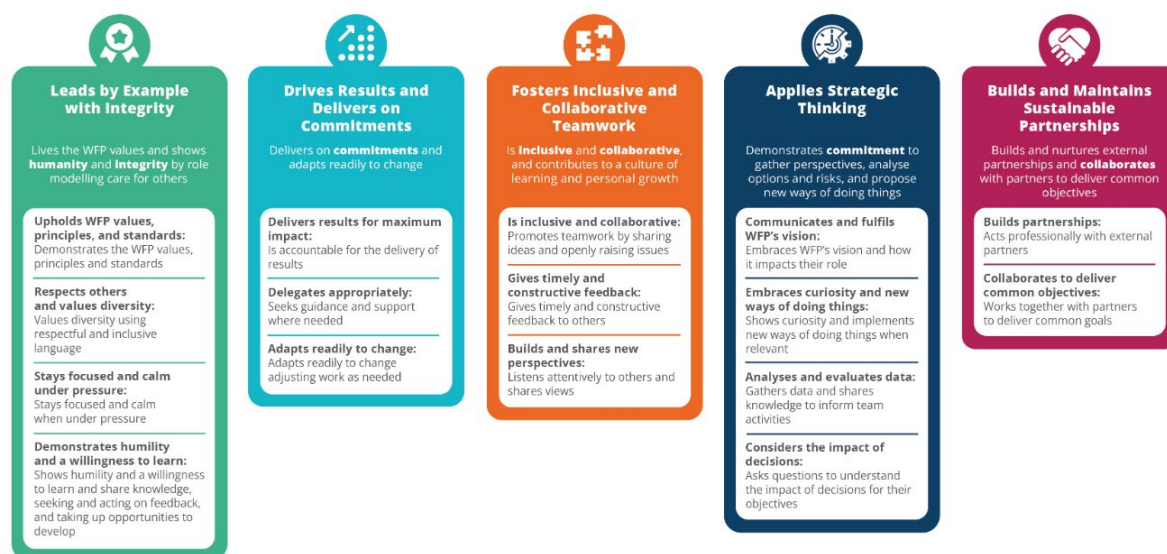
INFORMATION ON THE COUNTRY OF ASSIGNMENT

Egypt, located in North Africa, is a country with a rich cultural heritage and a pivotal role in regional affairs. Cairo, the capital city, is a vibrant metropolis that serves as a hub for business, technology, and international organizations. Egypt's strategic location and historical significance make it an essential player in global humanitarian and development efforts. Fellows will have the opportunity to work in a dynamic environment, gaining exposure to both humanitarian and technological innovations aimed at improving lives.

Please visit [Egypt - WFP](#)

WFP LEADERSHIP FRAMEWORK

These are the common standards of behavior that guide HOW we work together to accomplish our mission.



Different expectations of behavior are defined depending on your grade and role/responsibilities within WFP.

All employment decisions are made on the basis of organizational needs, job requirements, merit, and individual qualifications. WFP is committed to providing an inclusive work environment free of sexual exploitation and abuse, all forms of discrimination, any kind of harassment, sexual harassment, and abuse of authority. Therefore, all selected candidates will undergo rigorous reference and background checks. No appointment under any kind of contract will be offered to members of the UN Advisory Committee on Administrative and Budgetary Questions (ACABQ), International Civil Service Commission (ICSC), FAO Finance Committee, WFP External Auditor, WFP Audit Committee, Joint Inspection Unit (JIU) and other similar bodies within the United Nations system with oversight responsibilities over WFP, both during their service and within three years of ceasing that service.