



WFP celebrates and embraces diversity. It is committed to the principle of equal employment opportunity for all its employees and encourages qualified candidates to apply irrespective of race, colour, national origin, ethnic or social background, genetic information, gender, gender identity and/or expression, sexual orientation, religion or belief, HIV status, physical or mental disability.

**Economist Fellow
Economic and Markets Unit (APPF)
Analysis, Planning and Performance Division
WFP HQ Rome, Italy**

BRIEF DESCRIPTION OF THE DIVISION

The Analysis, Planning, and Performance (APP) Division is instrumental in advancing WFP's Zero Hunger mandate by placing high-quality evidence at the core of strategic and operational decision-making, resource mobilization, and accountability. This approach ensures that operations are not only efficient and cost-effective but also transparent and responsive to the needs of beneficiaries. APP works to ensure that decision-making within WFP is grounded in credible, relevant, and timely data. This is achieved through a structured approach that spans the full programme lifecycle, from conducting initial assessments that inform programme design to monitoring outcomes for ongoing projects.

The Food Security and Nutrition Analysis Service (APP-F) of the Analysis, Planning and Performance Division (APP) of the World Food Programme (WFP) leads WFP's food security analysis, supporting a large network of analysts in Regional Bureaux (RBx) and Country Offices (COs). Food security analysis is a cornerstone of the organization's work. It provides WFP, governments and partners with the essential information to identify populations in need and target the most appropriate type and scale of interventions as well as with the necessary knowledge to inform policy decisions and advocacy efforts. Analyses span emergency assessments, in-depth household surveys, food security monitoring, early warning and forecasting, spatial analysis and economic and market analysis.

The Economic and Markets Unit (APP-FE) leverages economic analysis to support operational decision-making and evidence-driven advocacy. The unit provides tools, guidance and support to WFP COs to enhance their capacity to monitor food prices, assess markets, analyze essential needs and adjust programmes in contexts of economic volatility, ensuring that interventions are both timely and effective. APP-FE further monitors economic trends and risks, analyzes food security implications of global economic shocks and runs scenario simulations, based on cutting-edge economic research.

GENERAL INFORMATION

- **Type of assignment: FELLOWSHIP**
- **Number of available positions: 1**
- **Country of assignment: Italy**
- **City of assignment: Rome**
- **Hiring Unit: Economic and Markets Unit; Analysis, Planning and Performance Division**
- **Supervisor: Lead Economist**
- **Working arrangement: In person**
- **Duration of assignment: 12 months**
- **Expected Starting Date: July 2025**

DUTIES AND RESPONSIBILITIES

The economist fellow will contribute to the work of the unit in general and, more specifically

- Support the unit's portfolio on prices and currencies, including price database management, price analysis and publication of monthly market monitors;
- Improve the unit's price-related products to better serve Country Office needs;
- Using AI tools, sustainably reduce the repetitive tasks of the work particularly related to the price database;
- Provide economic analyses for divisional and executive management, Regional Bureaus and Country Offices as requested.

STANDARD MINIMUM QUALIFICATIONS

- Be a master's student or a graduate Economics, Statistics, Household or Agricultural economics, Food Security or another relevant field.
- Excellent written and spoken English is required (proficiency/level C). Working knowledge of another official UN language (French, Spanish, Arabic, Chinese, Russian plus Portuguese) is an asset.
- Experience in quantitative analysis.
- Experience working with prices and economic data.
- Strong econometric skills highly desirable.
- Excellent command of MS office and Stata or R.
- International experience highly desirable.

TRAINING COMPONENTS

Throughout their assignment WFP Fellows have access to an industry leading learning platform, weLearn. Depending on opportunities and availability of funds, he/she may participate in WFP workshops or seminars, as appropriate.

LEARNING ELEMENTS

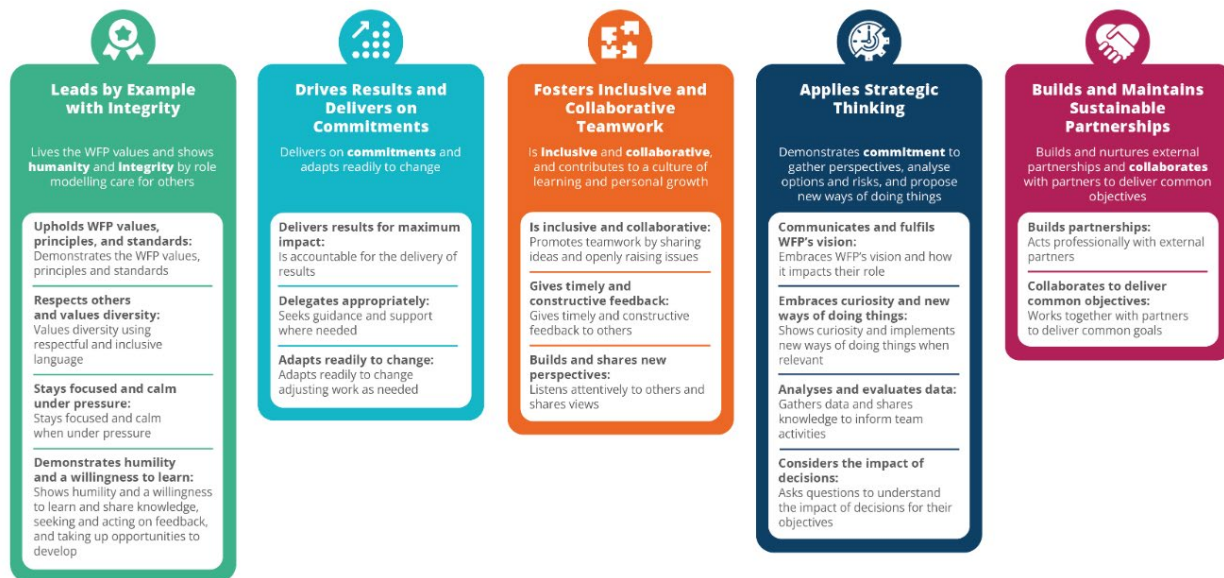
At the end of the assignment, the Fellow should:

- have gained experience in supporting humanitarian/food security interventions with actionable operational research;

- master the analysis of price data;
- understand how a UN organization works.

WFP LEADERSHIP FRAMEWORK

These are the common standards of behaviour that guide HOW we work together to accomplish our mission.



Different expectations of behaviour are defined depending on your grade and role/responsibilities within WFP.

All employment decisions are made on the basis of organizational needs, job requirements, merit, and individual qualifications. WFP is committed to providing an inclusive work environment free of sexual exploitation and abuse, all forms of discrimination, any kind of harassment, sexual harassment, and abuse of authority. Therefore, all selected candidates will undergo rigorous reference and background checks. No appointment under any kind of contract will be offered to members of the UN Advisory Committee on Administrative and Budgetary Questions (ACABQ), International Civil Service Commission (ICSC), FAO Finance Committee, WFP External Auditor, WFP Audit Committee, Joint Inspection Unit (JIU) and other similar bodies within the United Nations system with oversight responsibilities over WFP, both during their service and within three years of ceasing that service.

Saving Lives
Changing Lives